

**By PETER BROAD**  
CEO & Managing Director

Broadreach Marine Technical Consultants

# COMPANY PRESENTATION

**Looking forward to 2020 - marking 10 years of success  
supporting ship owners and technical managers**

**UK** +44(0)7826 521741 | **South Korea** +82 (0)10 6372 5105 | [info@broadreachmarine.com](mailto:info@broadreachmarine.com)

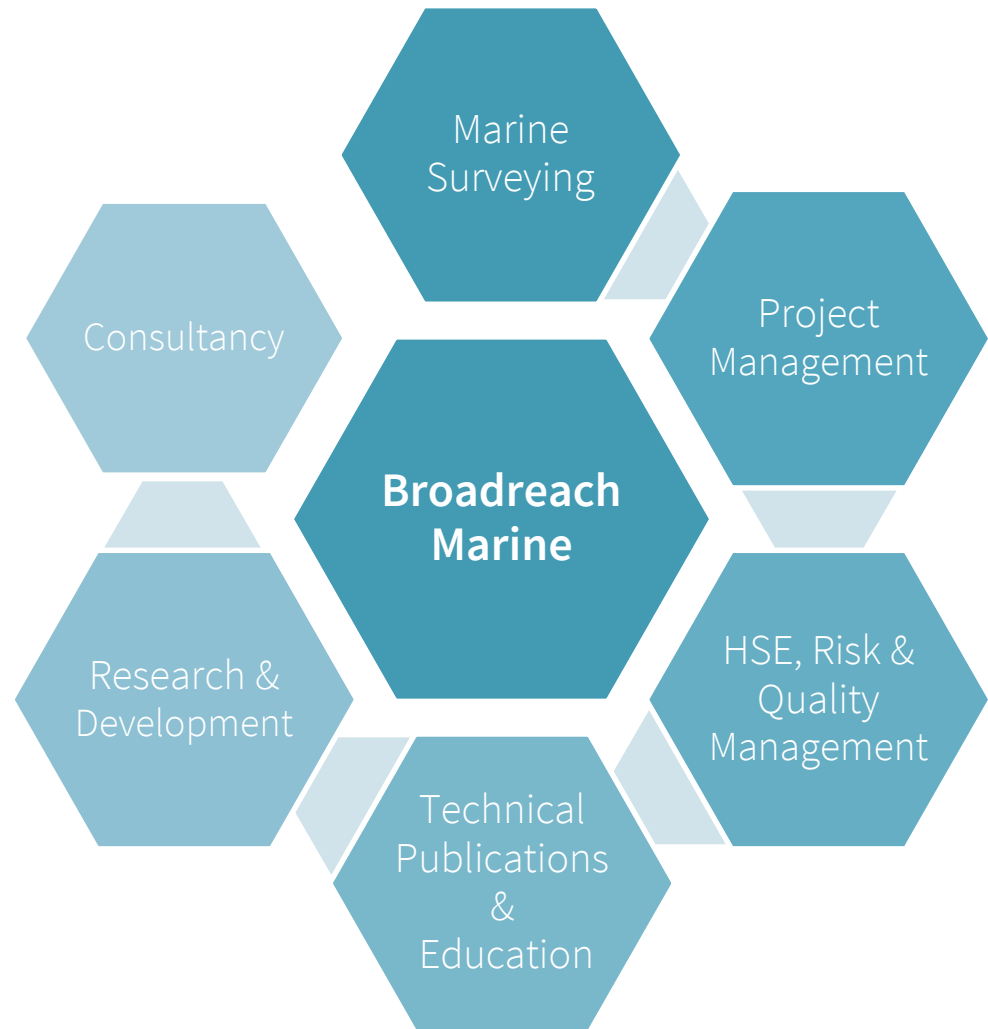
© Broadreach Marine Ltd 2018 | © Broadreach Marine (Korea) Co Ltd 2018

Rev 10 - June 2019

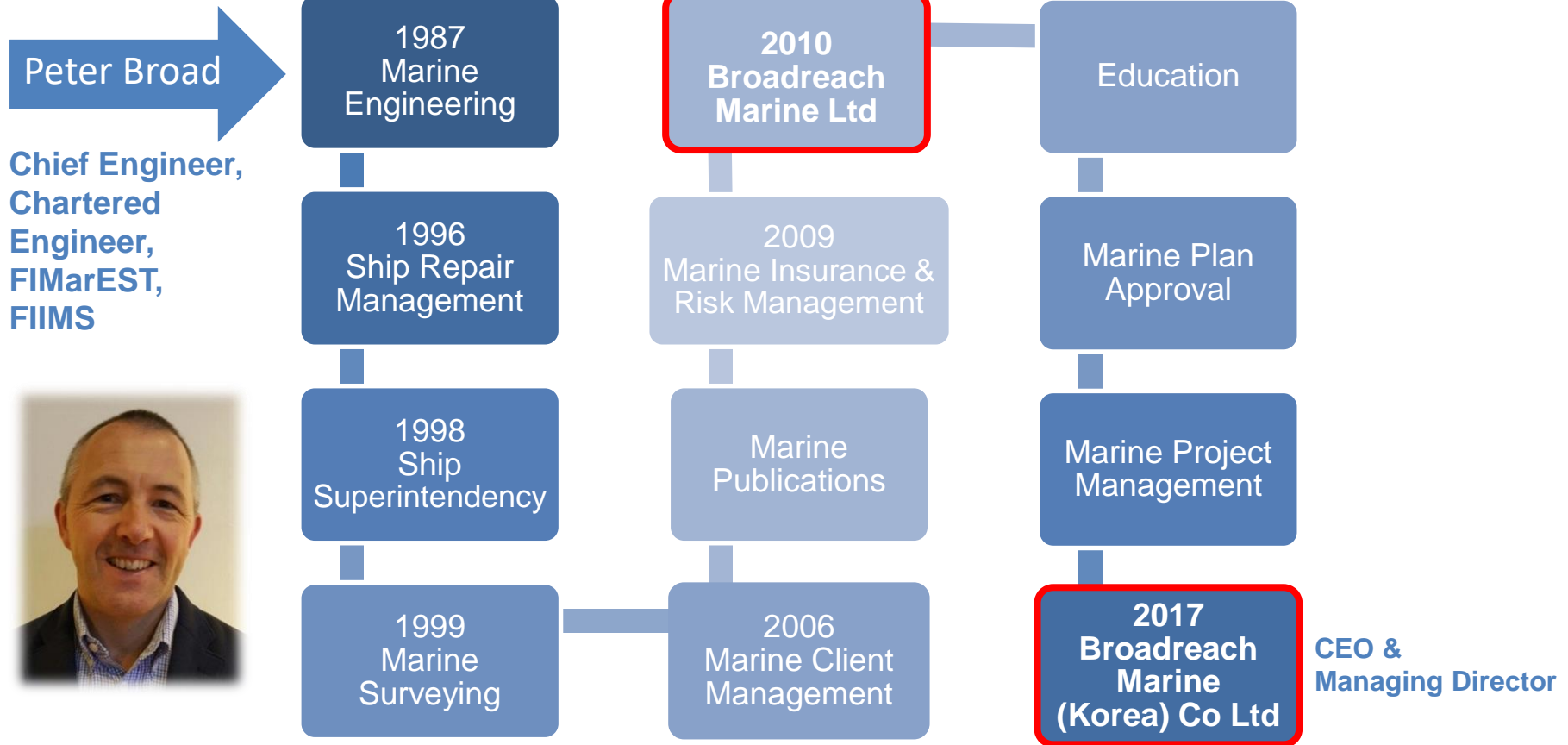
Broadreach  
**MARINE** 

# Welcome to Broadreach Marine

- Thirty years history in the marine industry
- Set up in the UK in 2010
- South Korean office opened in September 2017
- Managing multi-million dollar newbuild projects
- Offering plan approval, office, inspection and HSE services
- Providing training and education



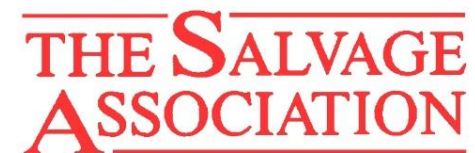
# At the helm of Broadreach Marine



## BRM has pedigree

- Staff backgrounds within the major classification societies
- Vast experience working for top international owners and technical managers
- Memberships of key professional bodies
- Extensive collective experience across the UK, Middle East and Far East
- Peter Broad, Managing Director, acts as In-Country Representative for the International Institute of Marine Surveyors

We are proud to be associated with these companies:



# BRM's USPs for your Far East projects

- Easy communication
  - English is our first language (mostly)
- Responses at short notice
  - We live locally
- No Visa delays
  - We all have local citizenship so enjoy freedom of travel in Korea, Japan, China, Singapore, the Philippines and Malaysia
- Lower prices for a quality service
  - Our rates are less than for an equivalent qualified person resident outside the area
- We are engaged locally
  - BRM is a Corporate Member of the IIMS and Peter acts as its In-Country Representative for Korea

Pre-purchase



Load outs, discharges, special cargos



Damage surveys, emergency docking



# Extensive experience with international clients

## Project management

- Newbuilds
- Shiprepair

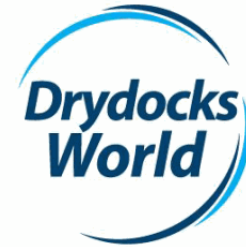
## Back office support

- Pre-contract specification reviews
- Plan Approval
- Site Team selection and management

## Auditing

- Vendor selection and auditing
- Subcontractor Auditing

We are proud to have work with the following shipyards:



**SAMSUNG HEAVY INDUSTRIES**



## Providing turnkey solutions to owners in Marine Project Management:



- Plan Approval
- Site Office Management
- Document Control
- Inspection Test Plans
- Site Office comments punch lists
- Class Certification reviews
- Class Survey Master Lists review in association with Owners Planned Maintenance schedules and processes
- Delivery protocols



# LNGC Construction expertise

Involvement to date in over 35 new construction projects for LNG vessels in Japan, Korea and China.

Awilko  
Bonny Gas  
BP  
BW  
Celsius  
Chandris  
DynaGas  
K-Line  
Maran Gas  
MISC  
NLNG  
Qatar Gas  
Ras Gas  
Shell  
Teekay



- MOSS
- NO96

- Mk III
- MK III Plus



- Steam
- DFDE

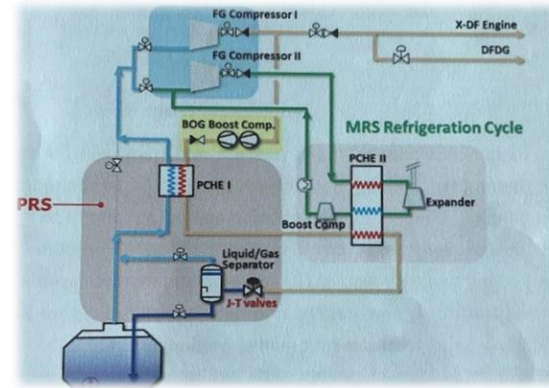
- MEGI
- XDF



# Leading edge involvement

- Gas containment
- Partial re-liquefaction and methane re-liquefaction
- LNG bunkering containment

- Full re-liquefaction
- PRS
- MRS



Following recent developments in LNG Bunkering and Tank Design

- Lattice
- Solidus
- Brick



[www.lattice-technology.com](http://www.lattice-technology.com)  
[sales@lattice-technology.com](mailto:sales@lattice-technology.com)



# HSE, Risk and Quality Management

Extensive experience supporting our service offering.

## HSE Auditing

- Sub-contractors and vendors
- Management systems verification and control in shipyards

## Risk assessments and mitigation

## Memberships held by staff:

- IOSH
- IIRSM
- NACE
- NEBOSH
- KSSS (building robust shipyard standards in Korea)

HSE Performance Recognition certificate from K Line/DSME

Our Staff are qualified and active members of the following professional bodies:



Korean Shipbuilding Safety Standards (KSSS) is the latest initiative for standardisation of HSE in all Korean yards

# Technical Publications and Education

Approved Training Provider for

- IMarEST
- NI
- IIMS

Papers delivered internationally

- Canadian Government
- Marine Insurance companies
- Risk Management companies

Global recognition

- Published in the open market
- Presentations at international Marine Conferences

Training modules approved by the IIMS for students

- HND
- BSc
- Masters



Government  
of Canada



# Shipyard Acquaint Training Course

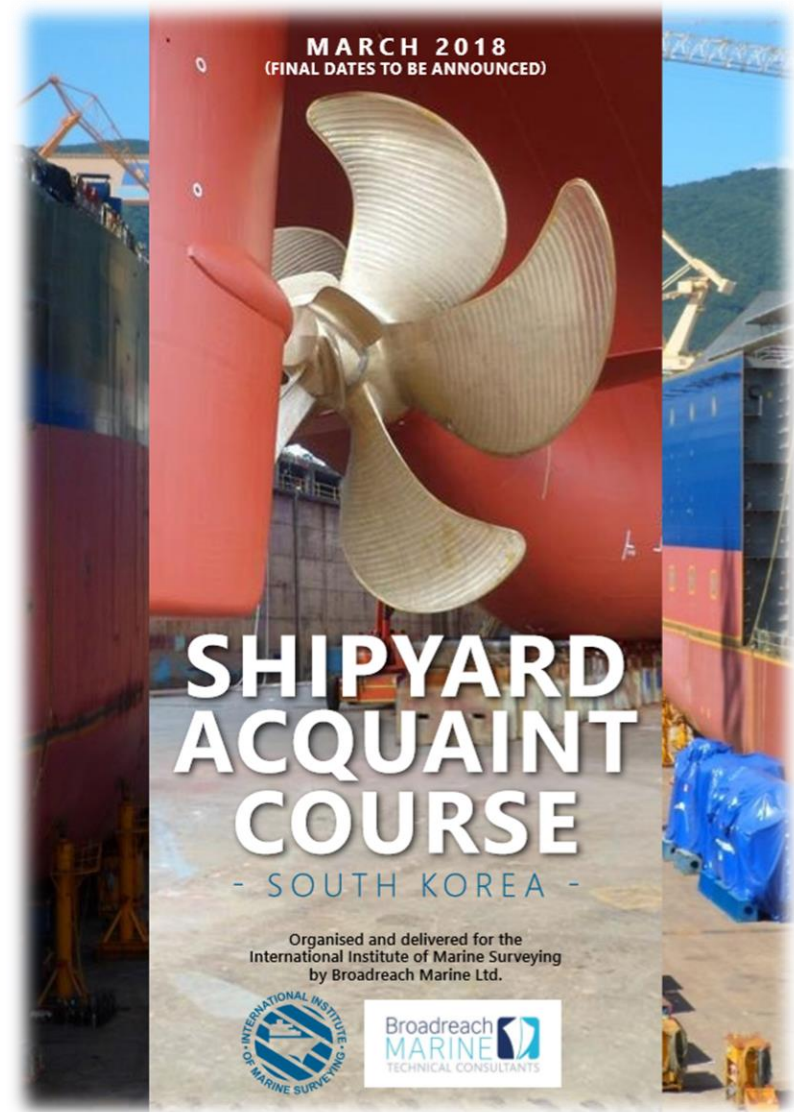
A course providing expert classroom tuition alongside real-time observation.

Unique access to

- One of the biggest shipyards in the world
- Factories of major vendors and suppliers

Accredited by

- The Institute of Marine Engineers, Science and Technology
- The Nautical Institute
- The International Institute of Marine Surveying for CPD Points



# Research & Development

Direct involvement with cutting edge LNG technology

- Containment conceptual designs
- Propulsion System development
- LNG as a fuel process management and integration

University cooperation

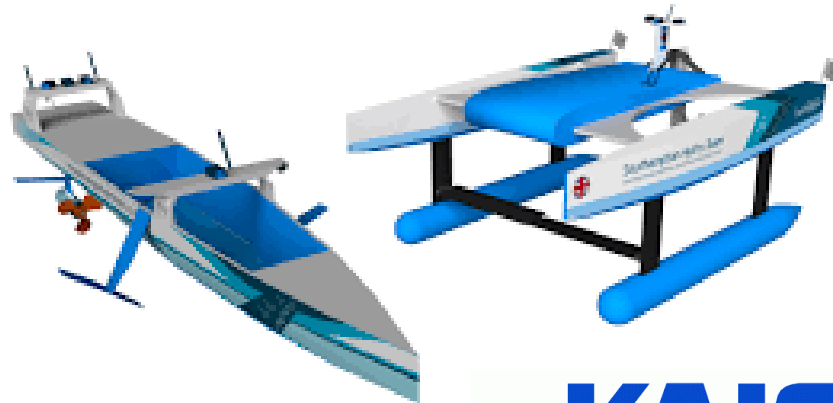
- Associated with the Faculty of Marine Science at Southampton University and the Hydro Team annual challenge

Supporting Working Group

- Korean Advanced Institute of Science and Technology.



KONGSBERG



**KAIST**

# Consultancy

- Provision of Technical Consultancy advice and solutions to Owners and Technical Managers
- Management of multi million dollar newbuild projects to the highest quality and safety standards

- Pre-Contract Specification reviews
- Pre-Contract Vendor selection advice
- Plan Approval
- Shipyard HSE and Quality Auditing
- HSE and Quality Risk Management
- HSE Gap Analysis
- Vendor auditing
- Sub-contractor auditing
- Site Team set up and recruitment
- Site Team Management
- Production process Quality System development and Inspection Test Plans



# Broadreach Marine

An international company with offices in the UK and South Korea., trading as

**Broadreach Marine Ltd**

and

**Broadreach Marine (Korea) Co Ltd**

Operating as one global company sharing resources and technical expertise.



# Broadreach Marine

E-mail:

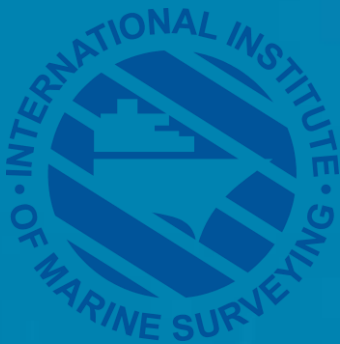
[info@broadreachmarine.com](mailto:info@broadreachmarine.com)

Website:

[www.broadreachmarine.com](http://www.broadreachmarine.com)



2020 - 10 years of success



Corporate Member and In-Country  
Representative for South Korea

Broadreach  
MARINE 